



Thriving Queensland
Kids **Partnership**

connect • catalyse • learn

Queensland Hubs Exchange of Expertise and Learning Initiative:

Overview

We know that what surrounds us shapes us. Safe, supportive environments, as well as consistent, responsive care provided by at least one adult, are critical for healthy development, and can help reduce the effects of adversity. Right now, some children aren't receiving the support they need, which can cause their health and development to suffer.

For families experiencing poverty and other stresses, raising children is like sailing in rough waters. Helping families and parents with supports, safe spaces to access services, and places to connect makes sure that they have the lighthouses and safe harbours that they need to navigate these rough waters.

Hubs are one way of offering these lighthouses and safe harbours to families. All hubs need to be equipped with the information, skills, support and resources to make the greatest impact in their community.

The Queensland Hubs Exchange of Expertise and Learning Initiative provides Queensland hubs with the opportunity to access connections, knowledge, skills and strategies that will help more children (and their families) to start, grow and learn well.

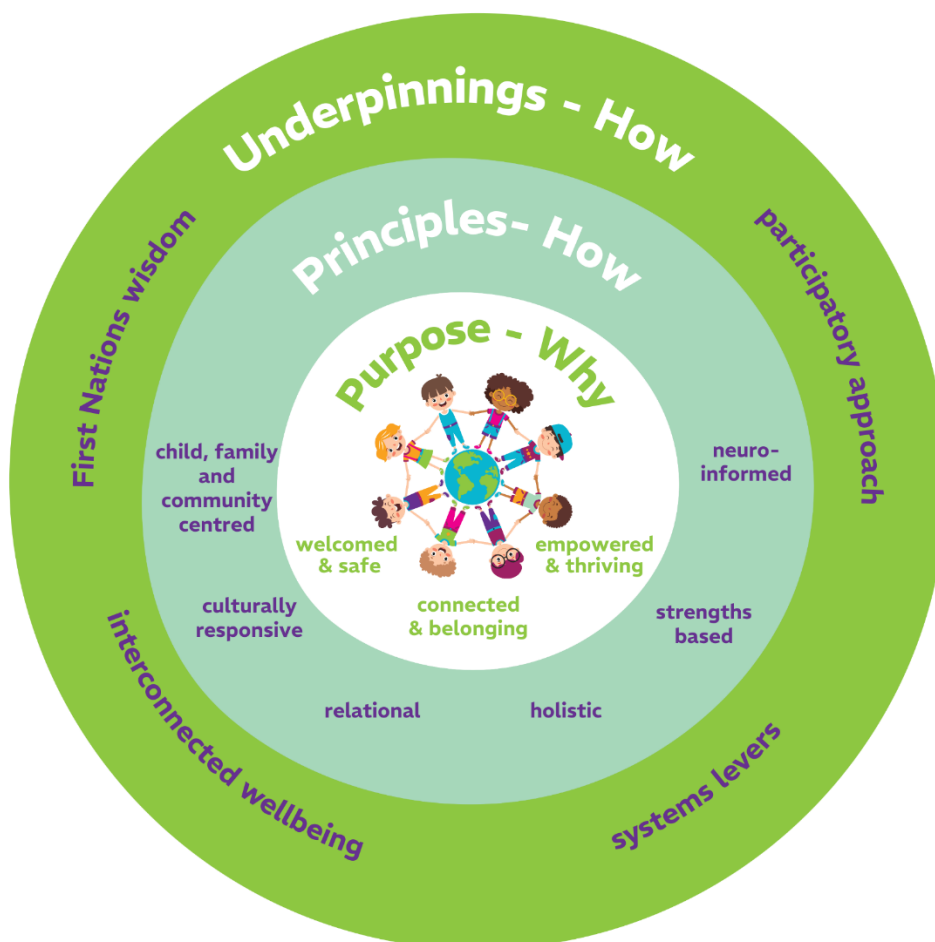
This document is designed to be read in conjunction with [the Frequently Asked Questions \(FAQ\) document](#) about the overall initiative, and the opportunities that fall within it.

Background

Thriving Queensland Kids Partnership (TQKP) is an initiative of the Australian Research Alliance for Children and Youth (ARACY). It is a movement of people and organisations working to improve the systems that shape the lives of Queensland's children and young people, so that every child and young person has what they need to thrive, no matter their background or where they live. For more information, see www.tqkp.org.au

In 2025 TQKP co-developed a Queensland Child and Hubs Framework (the Framework) with input from multiple people, services and communities across Queensland - and national leaders - with the aim of:

- synthesising research, experience and learnings
- fostering a common language and understanding regarding child and family hubs
- enhancing partnerships and connections among key child and family-focused agencies.



Elements – What

partnership
development &
management

soft & hard
structure

services &
program mix

funding

recruitment,
support &
professional
development

strategy &
planning

relationship to
the local
community

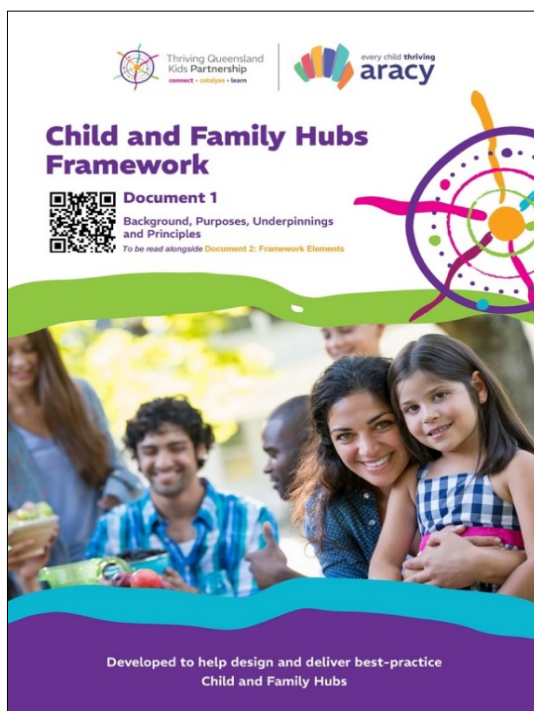
information &
reporting
requirements

shared
knowledge,
skills, frames,
tools &
processes

leadership &
governance

The Framework is available for downloading in full at a dedicated Child and Family Hubs page on the TQKP website, available here: www.tqkp.org.au/child-family-hubs/

- *Document 1:* Background, purposes, underpinnings and principles
- *Document 2:* Ten Framework elements



Hubs continue to be prioritised in TQKP's [2025-30 Strategy](#), with a focus now on testing the Framework. To enable this, TQKP established the Hubs and Spokes Collaborative which has co-developed the Queensland Hubs Exchange of Expertise and Learning Initiative. The Collaborative is made up of organisations with a deep interest in the delivery of hubs in Queensland, and beyond. This includes the [National Child and Family Hubs Network](#).



The work of TQKP is made possible by the generous investment of all our philanthropic partners. The Queensland Hubs Exchange of Expertise and Learning Initiative is being undertaken with the support of our funding partner, Minderoo Foundation.

The purpose of the Queensland Hubs Learning Exchange

The purpose of this initiative is to provide a suite of learning and capability offerings for hubs to engage with that are aligned with the Framework.

The offerings will support hubs to achieve:

Increased capabilities	Hub leaders and practitioners have; <ul style="list-style-type: none"> developed a shared understanding of what good practice looks like in a hub improved knowledge, confidence and skills to apply the Framework.
Productive engagement	Hub leaders and practitioners have <ul style="list-style-type: none"> trust and are connected to each other bravery and courage to work together in ways that are more productive and able to tackle systems change
Practice learning and change	Hub leaders and practitioners learn about good practice, make improvements and use the learning in practice

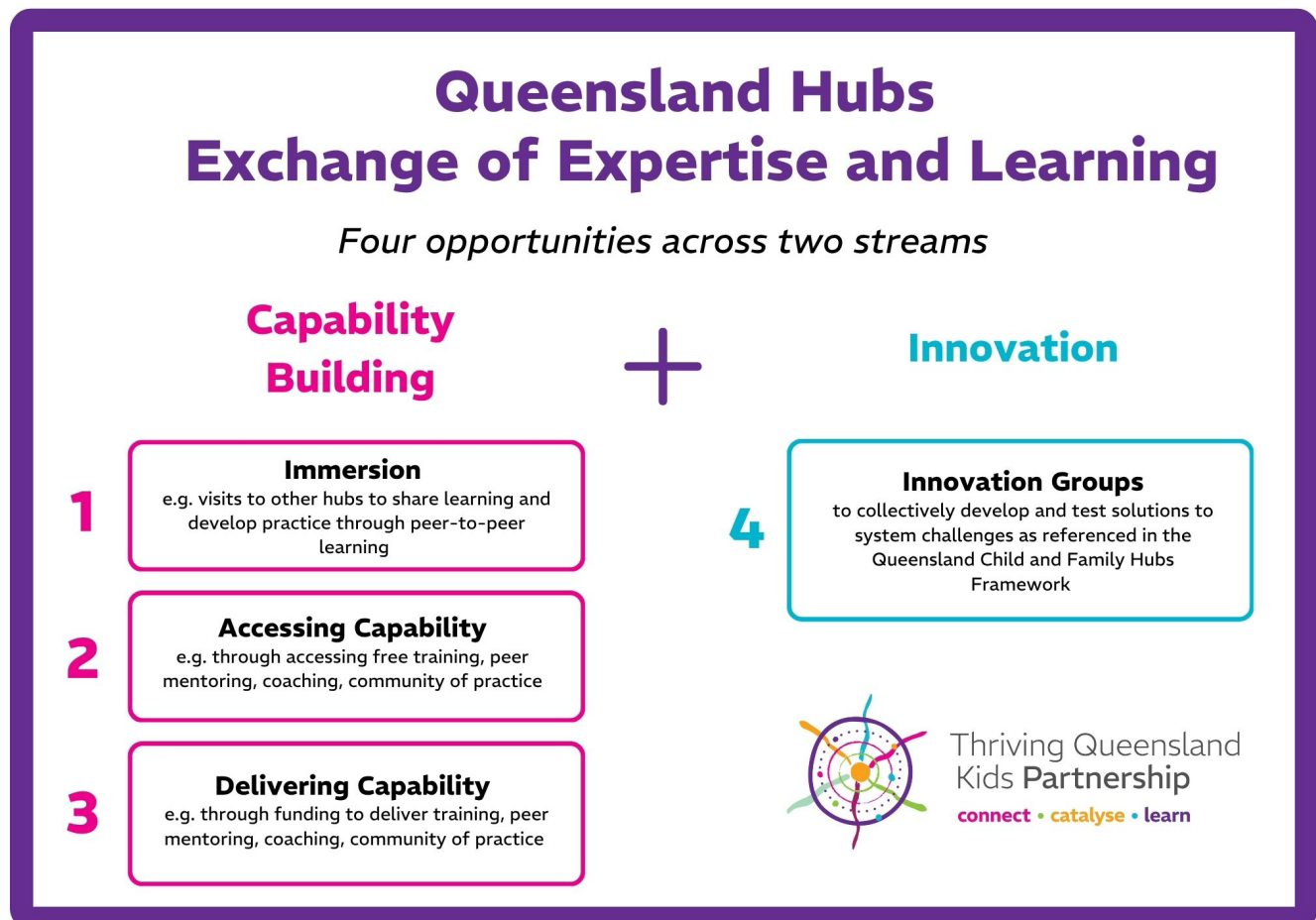
Eligibility

Child and family hubs (hubs; focused on pregnancy to children aged 12 years) provide a supportive, social space with integrated service offerings that support child development and learning, facilitate relationships with others and improve child and family health and wellbeing.

For the purpose of this initiative, this includes settings as varied as early years spaces, schools, public libraries, neighbourhood/community centres and Aboriginal Community Controlled Organisations. For more information regarding scope, see the [FAQs](#).

The opportunities

This initiative offers four opportunities across two streams, summarised below. Interested hubs can apply for one or more opportunities:



Participating hubs will be required to share the learnings and impact of the opportunities they access.

Please note that only those hubs/organisations with an ABN will be able to apply for the Immersion or Providing Capability opportunities.

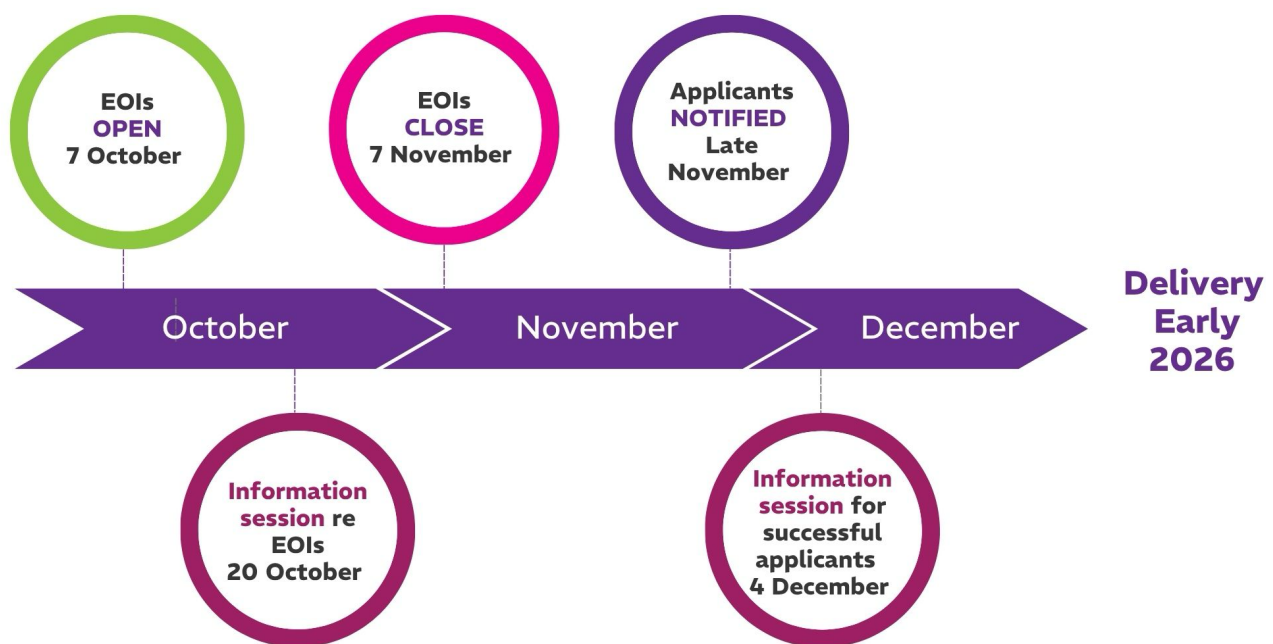
The Expression of Interest (EOI) process

EOIs are open to eligible hubs, with options for alternative methods of submission as outlined in the Frequently Asked Questions form. Submissions by groups of hubs (such as via a lead agency, or a geographical region) are encouraged.

The current round opens 7 October 2025 and closes on 7 November 2025.

Further rounds may be opened depending on demand.

An optional information session on the initiative and EOI process will be held 11:30am – 12:30pm (AEST) on Monday 20 October 2025.



For more information

See <https://tqkp.org.au/hubs-learning/> for the following:

- Frequently Asked Questions
- preview of the EOI form and related documents
- online EOI form
- how to register for the information session on 20 October



or please contact

Sophie Morson
Principal Partnership Manager – Hubs
Thriving Queensland Kids Partnership
sophie.morson@aracy.org.au
0411 374 664

Thank you for your interest!



Thriving Queensland
Kids **Partnership**
connect • catalyse • learn