



**Queensland Kids  
Partnership**  
every child thriving



**CAPE YORK  
PARTNERSHIP**



**LOGAN  
together**



# Queensland Places Network

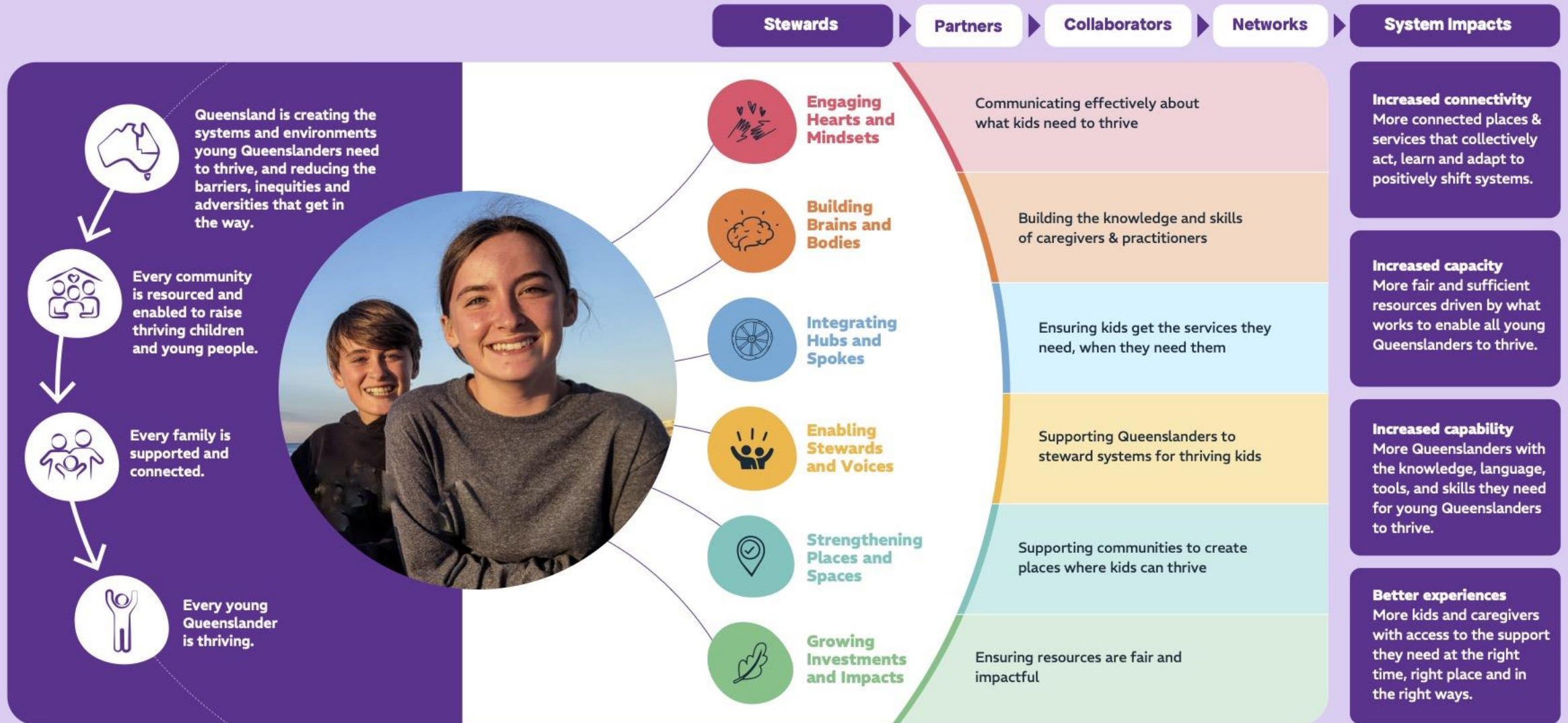


# Contents

01. Queensland Kids Partnership	P3-4
02. Places and Spaces Portfolio	P5
03. Queensland Places Network	P6-8
04. Governance	P9
05. Systems Reform	P10
06. Growing and Amplifying	P11
07. Outcomes	P12

# Our Intergenerational Vision

# Our 2025–2030 Strategy & Intended Impact



# Implementing our 2025–2030 Impact Strategy



**Queensland Kids  
Partnership**  
every child thriving

Our strategy has 6 portfolios of work that together will help change systems so every young Queenslander can thrive. This builds on our work and learning since 2020. These inter-connected portfolios are:



## Engaging Hearts and Mindsets

**Communicating effectively about what kids need to thrive.**

Engaging the hearts and mindsets of Queensland's public, including decision-makers, so they prioritise and resource the support that children, young people, families and communities need to thrive.



## Enabling Stewards and Voices

**Supporting Queenslanders to steward systems change for kids.**

Shifting how people and organisations work together to steward systems change and heed the lived experience of children and young people, their families and caregivers.



## Growing Investments and Impacts

**Ensuring resources for kids are fair & impactful.**

Challenging and changing the flow and impact of public, philanthropic and corporate resources so that Queensland's children, young people, families and communities receive their fair share, and resources are focused on evidence-based services that create positive outcomes.



## Building Brains and Bodies

**Building the knowledge and skills of caregivers and practitioners.**

Equipping families, caregivers, workforces and communities with science-based knowledge, skills and tools for:

- building healthy brains and bodies, and
- tackling the products and conditions that harm the development and wellbeing of children and young people.



## Strengthening Places and Spaces

**Supporting communities to create places where kids can thrive.**

Enabling place-based systems work across Queensland so that children and young people have the best possible social, economic, physical and digital environments to grow up in.



## Integrating Hubs and Spokes

**Supporting kids and caregivers to get the services they need.**

Enabling the adoption, innovation and scaling of more integrated and equitable services so that children and young people, their families and communities can better access holistic, multi-generational and locally relevant support.



### Portfolio 3

# Strengthening Places and Spaces

## Supporting communities to create places where kids can thrive

“A community is like a puzzle, you need to have all the bits to make it work.”

M, aged 9

From Putting the pieces in place: children, communities and social capital in Australia, Sharon Bessell, The Australian National University 2014

### Our 2030 outcomes

Queensland places are more child friendly, with the right supports and services, and the social, economic, physical and digital environments so that children, young people, their families and communities thrive.

#### What success looks like

- An increase in the number of communities enabled as agents of change to be child and youth friendly communities.
- Policy, practice and investment are better geared to support place-based and country-focused environments and infrastructure.
- Communities have better data visibility, enabling them to understand and design solutions.
- Local Governments recognise child, youth and family wellbeing as a priority.
- The Queensland place and country ecosystem is better connected and able to solve systemic challenges.

#### QKP will convene and enable

- Convening the Place and Country Collaborative to:
- enact the agreed collective actions
  - create the conditions for the growth of place and country focused systems change
  - amplify the wisdom of people in place
  - enable place-based data generation, access and sense-making
  - influence systems to achieve equity across the places where children and young people live
  - transform investment in place to create communities, environments and infrastructure that best support children's development, wellbeing and resilience.

#### QKP will facilitate investment and engagement

Implementing the Queensland Place-based Network model, with a focus on growing and sustaining place-based approaches, stewarding investment, sharing resources, and creating the space to collectively learn and drive system innovation.

Partnering with Developmental Environments initiatives to design, demonstrate and make accessible environments (natural, built and digital) and infrastructure that fosters the development, wellbeing and resilience of children and young people.

Supporting the Thriving Kids in Disasters collective actions so that the systems in place for disaster prevention, preparedness, response and recovery are equipped to meet the needs of children and young people.

#### QKP will amplify the work of others

Driving and supporting initiatives that focus on place and environments. For example, through PLACE – the national organisation established to support community-led, place-based approaches.

# Queensland Place Network



## Vision

Over a 10-year horizon, place-based approaches will become embedded and sustainable through systems change — enabled by strong networks, shared learning, community-led action, and coordinated investment.

Queensland will have a thriving place-based ecosystem capable of tackling complex challenges collectively and innovatively.

### Shared Governance

establishing collaborative governance for stewarding investment

### Growing and Amplifying

invest in shared infrastructure to support coordination, learning and capability, leveraging existing capabilities

### Systems Reform

facilitate rich learning environments to catalyse system innovation

“Our relationship with the network has allowed us to establish sustainable practices, innovate, and increasingly influence systems change”

# Building the Network

The Network sets out to increase efficiencies, drive innovation and future-proof our Queensland place based eco-system in ways that:

- sustain long-term funding commitments
- put community central to leadership and decision making
- create collective structures for system stewardship that is adaptable and resilient against the challenges that arise from election cycles or unforeseen events
- allow for alignment of strategies, policies, practices and funding across government, funders and communities
- share infrastructure that enables places to access specialised support while reducing costs.

Key to the Network is building and leveraging the existing infrastructure and wisdom we have in Queensland.

**Logan Together, Cape York Partnerships, Gladstone Region engaging in action Together (GRT) and Queensland Kids Partnership** are the four delivery partners that have so far been identified with the current capability and capacities to support and mentor others.

This is a starting point – the model can expand the nodes and the offerings.

Each node offers and different expertise, allowing PBIs to connect with the nodes offering what they need at that time.

# Key Elements of the Network

## Shared Governance

### The unique value proposition:

- Develops a holistic cross sectoral approach to a governance of care
- Facilitates strategic investment and engagement in place
- Supports reform of funding structures
- Builds the infrastructure for shared resources

## Growing and Amplifying

### The unique value proposition:

- Serves all communities from established to emerging place-based initiatives
- Facilitates access to peer support, immersions and mentoring
- Invests, targets and shares supports and resources for places to be drivers of their own change
- Cultivates and leverages collective practice wisdom

## System Reform

### The unique value proposition:

- Puts collective learning into practice
- Drives system reform through collective innovation
- Facilitates, supports and scales innovation in place and across the network
- Builds on the innovation expertise in the network

“The network is strengthening Queensland’s place-based communities by connecting us as a collective force rather than a series of isolated efforts. By aligning insights, evidence and lived experience across places, we become greater than the sum of our parts, amplifying our shared voice and increasing our influence on policy and system reform.”

# Shared Governance

Establishing collaborative governance for stewarding investment.

The Network has been designed to be agile and flexible, ground in care, trust, and mutual accountability. The aim of the network governance is to shift towards place-driven leadership, actively guided by places, where they play an active role and are given due recognitions and influence in the Network.

## Strategy Group

steward the Network, create the authorising environment, help mobilise the resources, act on opening system blockers

## Funders Community of Practice

be the best partner for QLD kids, families and communities by pursuing new and better ways to work together and create space for learning and collective doing

## Impact Group

support the design, development and implementation of the impact strategy

## Delivery Team

oversee the scope, schedule and overall delivery of activities, serve and support the network, and facilitate learning

“The network is strengthening Queensland’s place-based communities by connecting us as a collective force rather than a series of isolated efforts”

“TQKP network fosters a culture where knowledge is shared generously and questions are welcomed. Partners are not left to navigate complexity alone”.



# Systems Reform – Breakthrough Innovation

Facilitate rich learning environments to catalyse system innovation.

coalescing around a shared issue, challenge or opportunity that requires intensive action to progress or scale – in place or across places

“The network offers a trusted space where complexity can be explored openly and where learning is shared generously. That is critical to sustainability”.

“The network is providing the local community a platform to elevate local wisdom, elevate community voice and cut through the noise, with the aim of future-proofing our place-based ecosystem.”

## The principles of the Breakthrough Innovation Group are threefold:

- To model a collaborative way of working: partners collectively examine complex challenges and build shared understanding of what conditions are needed to effect system change, with the risk appetite to try new things.
- Learning and co-designing: partners draw on established frameworks, collective sense-making and shared learning to co-design approaches, clarify roles and responsibilities, and advance new ways of working.
- Applied action in practice outside of the BIG sessions is where the breakthroughs happen. Partners implement the approach through an adaptive learning loop between BIG convenings. Learning and insights are gathered to inform progress and course correct where needed.

# Growing and Amplifying

invest in shared infrastructure to support coordination, learning and capability, leveraging existing capabilities

## Place Learning Exchanges

facilitate rich learning environments for learning, to catalyse system innovation and drive efficiencies and quality

## Peer Support

connecting place to place- for deeper developmental support, guidance or coaching focused on what is by the place seeking support

## Learning Sprints

applied learning, through sharing insights, applying strategies, learning and coaching. Learning focus prioritised by the network

## Immersion

learning through immersing in other places, to see, feel and experience what it looks like

“The mentors that the network provides has guided us through workshops, that helped formalise our strategies, priorities, and long-term direction. These workshops continue to shape our work, alongside the voices of our community.”

“Leading cross-sector work in a regional community can at times feel isolating, and the network provides connection, perspective and encouragement alongside practical insight.”

# Outcomes



## In 2 years, we have created a Network where:

- Communities feel like this network is a trusting and safe place, it is a place to learn and make connections, and they know who to reach out for support communities
- Stories are collected and shared of where things have worked and where they haven't - underpinned by strong data
- Efficiencies and cost savings of the place-based work is demonstrated
- The implementation gap is reducing and place leadership growing
- Communities are empowered, trusted, heard and influencing change
- The dialogue has shifted so that governments, funders, communities see we're all in the network, we're all partners in the network.
- The voice is unified, the network is strong, and it has the capacity to withstand election and policy changes
- Government relationships are structured and purposeful

Over the next 2 years the Network aims to strengthen the enablers, relationships and data, enabling authorisation of the long-term change. It will start building a shared picture of where we're heading and we have enough impact stories to hold us all to get to the future.

We will see more communities are engaging and experiencing value from being in the network.

There are growing leaders in place.

We're improving and joining up evaluation approaches, so we're getting more stories that reinforce the change that's possible.

Government is shifting from unpredictable cycles to something more stable and joined up.

It's less relational; it's becoming more structural.



**Queensland Kids Partnership**  
every child thriving

## Queensland Places Network philanthropic funding partners



**EC WHITE TRUST**

managed by  Equity Trustees

